

# Asprova APS / Asprova SCP



# Company profile



Established in 1994 as Japan's first production scheduling software company.

Headquarters in Tokyo and Osaka (Japan), Shanghai (China), Seoul (Korea), Wetzlar (Germany), and Washington (North America), Kuala Lumpur (Malaysia)

# Implementation Results



3,340 units deployed as of May 2022

2,392	within Japan
948	internationally

Industries:

Automotive, electrical, electronic, semi-conductor, mechanical engineering, construction, metal, aerospace, ship-building, plastic, food and beverage, pharmaceutical, cosmetic

# Companies implementing Asprova

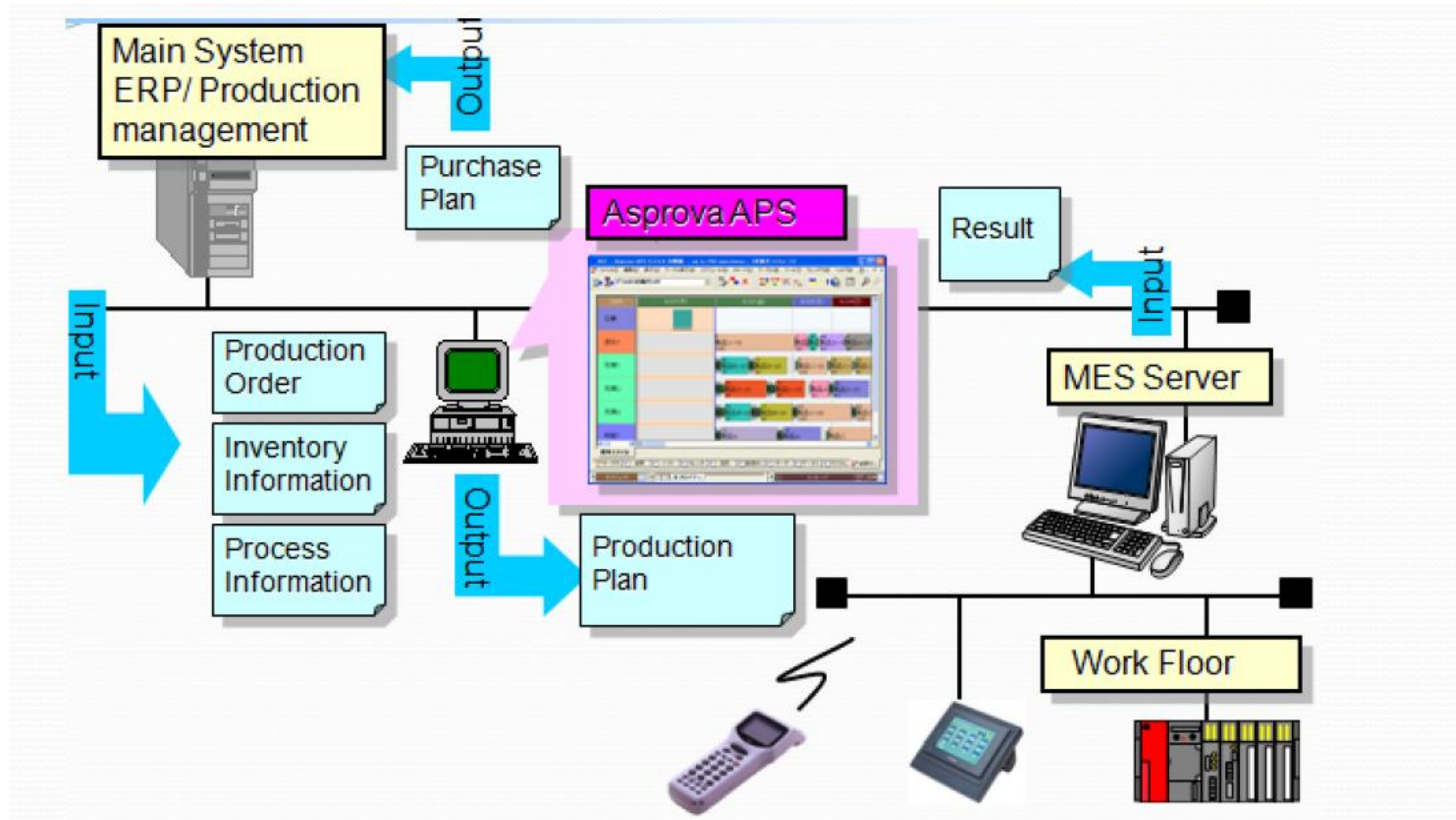


# Available Languages



Multiple Languages	Japanese	English	Korean
Chinese (simplified)	Chinese (traditional)	Thailand	Indonesian
Vietnamese	German	Polish	Hungarian
French	Spanish	Turkish	Portuguese

# Positioning in production control



# Merits of implementing Asprova



Ultra High-speed Scheduling

Graphical Visualization

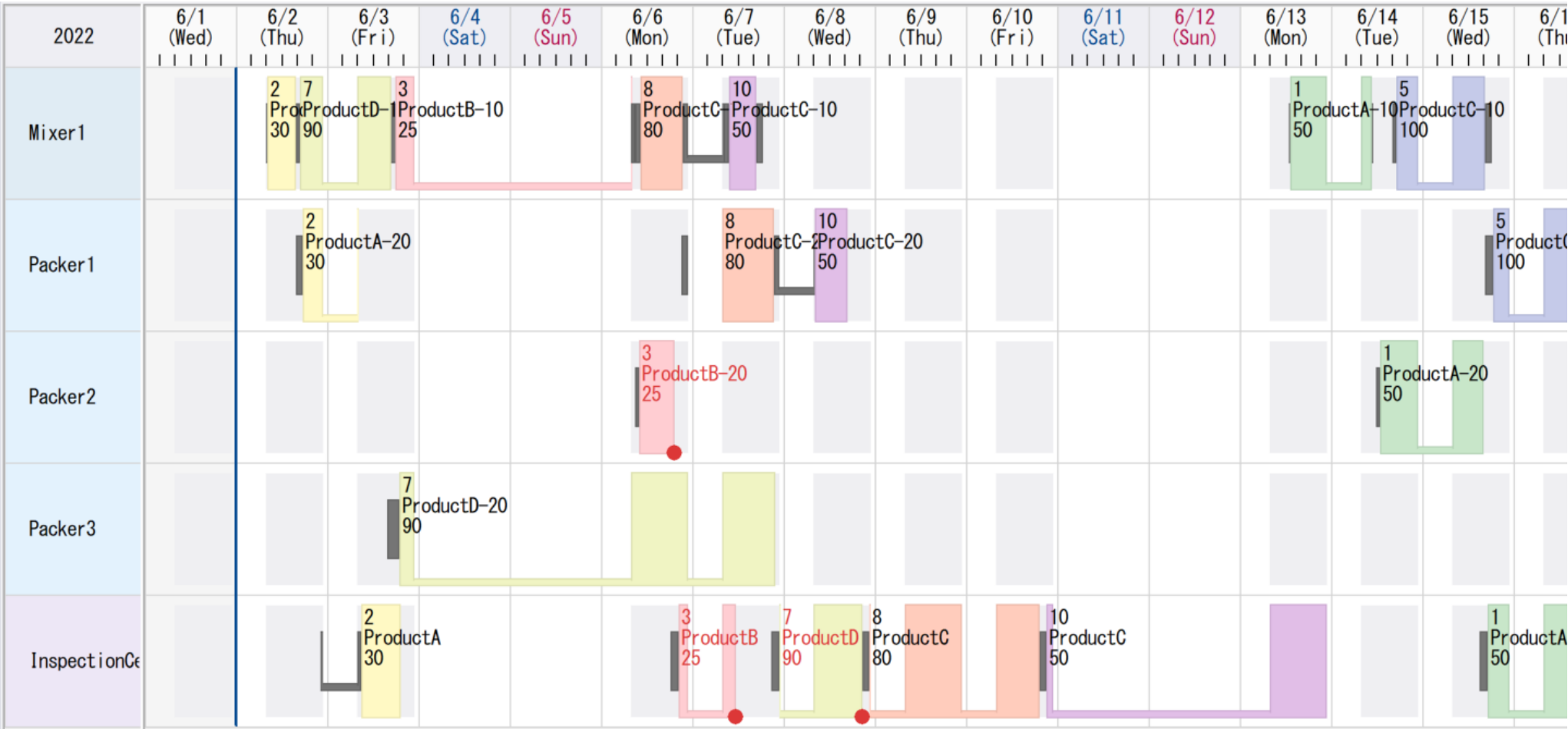
Shorten lead-times

Reduce inventory

Easy confirmation of projected due dates

Accurate quoting of finish times

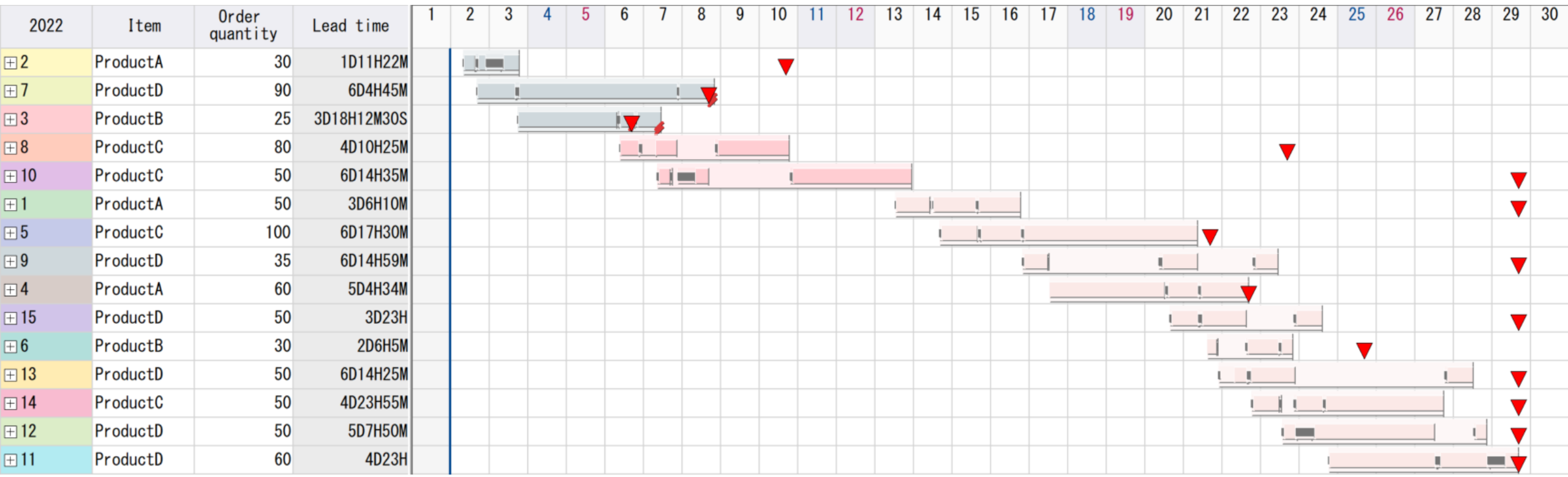
# Resource Gantt Chart



- Shows an overview of the tasks each machine or worker will carry out
- Production schedule is created according to resource capacity and availability
- Jobs can be adjusted by dragging with the mouse

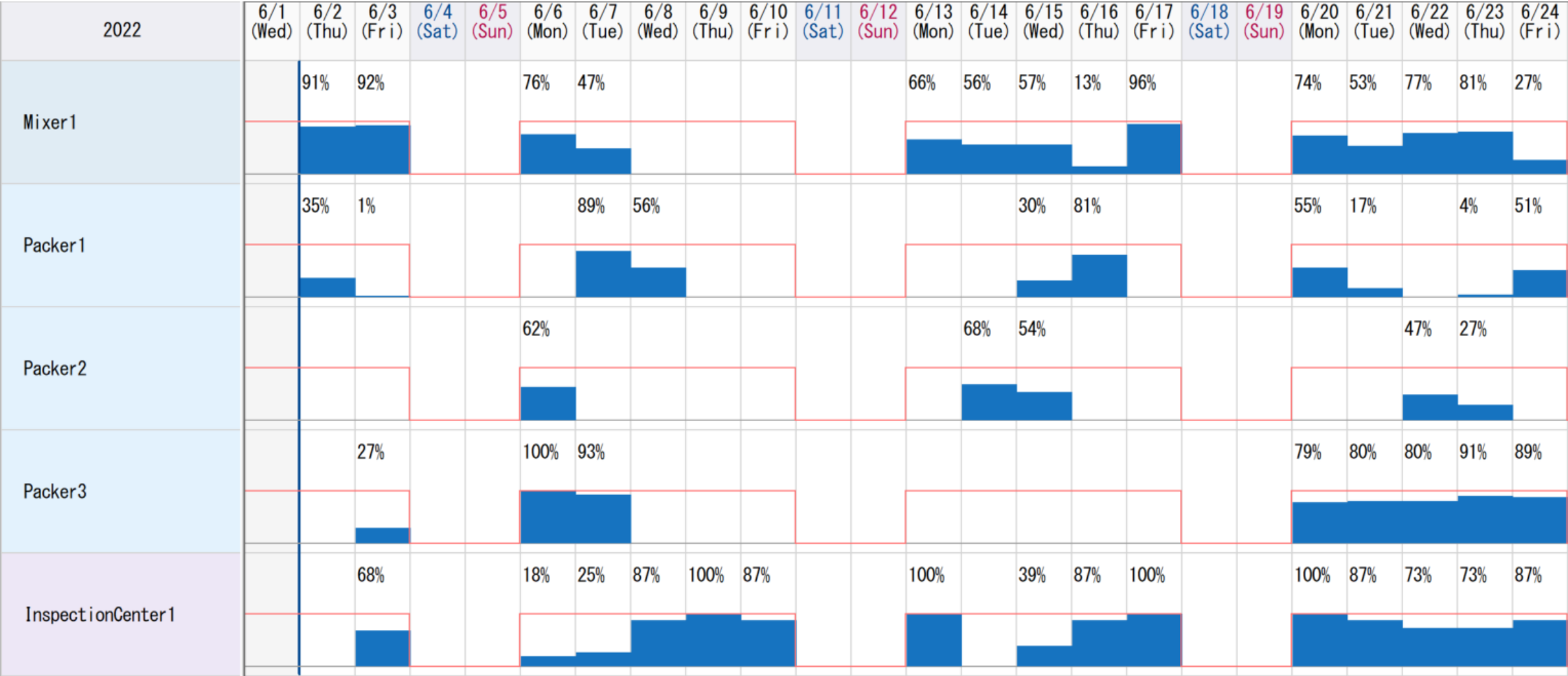


# Order Gantt Chart



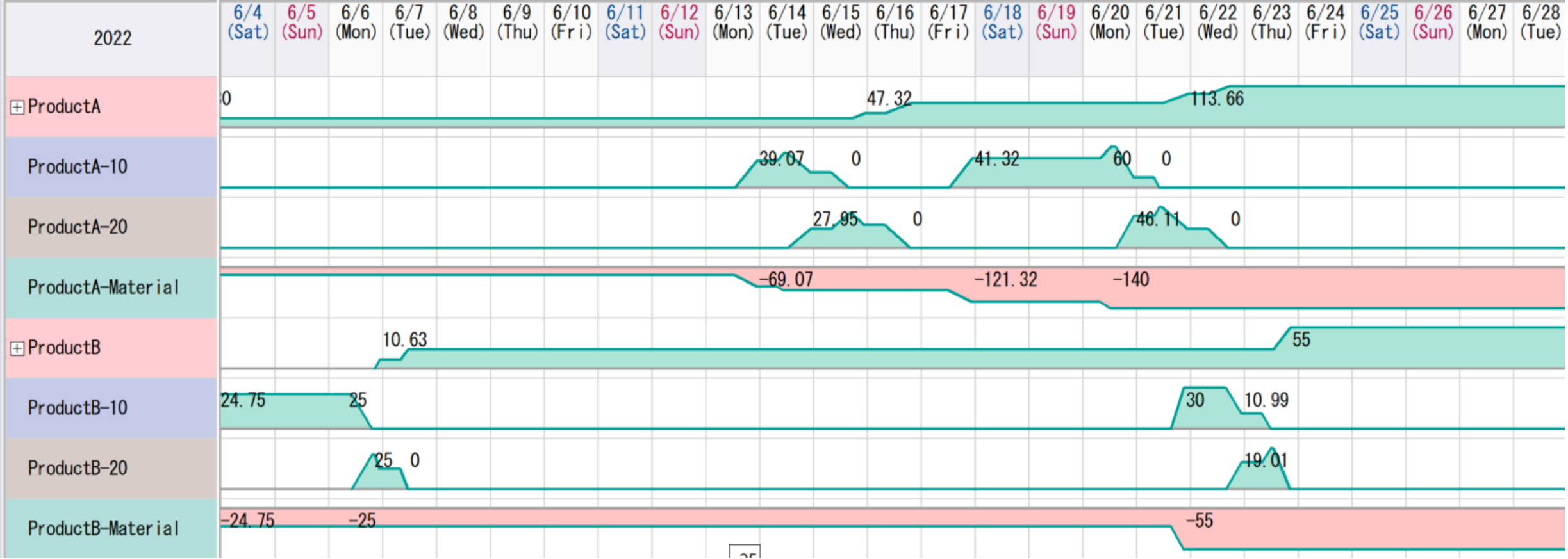
- Shows an overview of all orders in one chart
- Start/finish times, due dates of orders are easily visible
- Rows can be expanded to view individual operations and tasks

# Load Graph



- Displays the load of all resources
- Rows can be drilled down to view the associated orders
- Data can be exported to spreadsheet

# Inventory Graph



- Displays the fluctuations in inventory for all items
- The effects of scheduling can be seen in advance
- Data can be exported to spreadsheet

# Connection with external systems



	Code	Data type			Code	Data type
	<input type="checkbox"/> Internal Property				<input type="checkbox"/> External fields	
1	Order code	WBSKey	=====	1	Order code	String
2	Order type	Enum	=====	2	Order type	String
3	Item code	WBSRef	=====	3	Item code	String
4	EST	Time	=====	4	Due date	Time
5	Due date	Time	=====	5	Order quantity	Float
6	Order quantity	Float	=====	6	Priority	Float
7	Priority	Float	=====	7	Customer code	String
8	Customer code	WBSRef	=====	8	Display color	Integer
9	Display color	Integer	=====	9	Version	String
10	Version	String	=====	10	(Empty)	Undefined

Import/export data by visually connecting fields

# Asprova operating environment



OS: Windows Server / Windows

CPU: Intel core i3 or higher, 32 bit or 64 bit (x64)

Memory: 1Gb or greater (depends on volume of data)

Hard disk: Uses about 500MB for installation.

