

01 Dispatching view – new window type

Useful for confirming and re-arranging the ordering of tasks, including changing of staff/resources for the task.

Details

The dispatching view shows the order in which tasks will be carried out for each resource, allowing for easy confirmation of the jobs for today, this week, etc.

Operations can be moved by dragging with the mouse to change their dispatching order or resource.

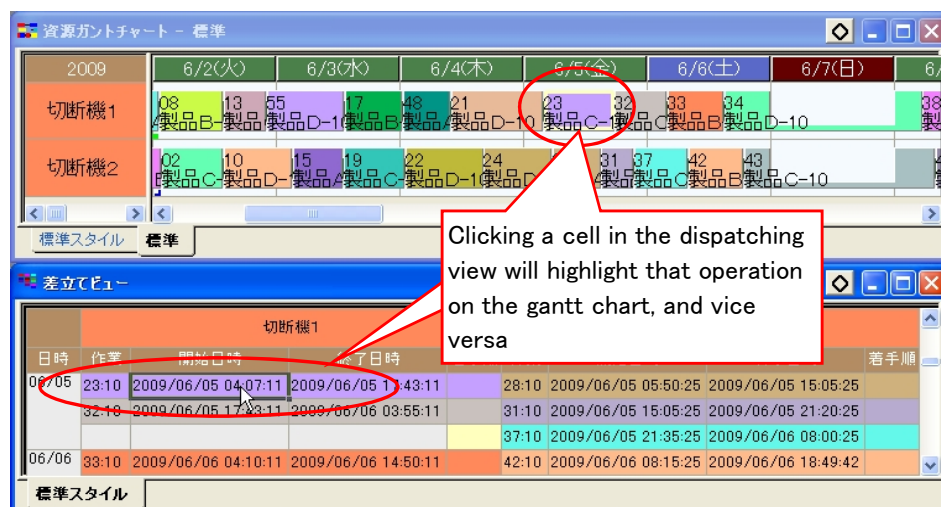
The dispatching view is likely to be convenient for those who are used to a table type schedule display.

切断機1				切断機2			
日時	作業	開始日時	終了日時	作業	開始日時	終了日時	着手順
06/01	01:10	2009/06/01 06:15:00	2009/06/01 06:55:00	04:10	2009/06/01 00:15:00	2009/06/01 06:15:00	
	03:10	2009/06/01 07:10:00	2009/06/01 16:01:25	07:10	2009/06/01 06:30:00	2009/06/01 09:30:00	
	05:10	2009/06/01 16:01:25	2009/06/02 01:09:59	11:10	2009/06/01 09:45:00	2009/06/01 16:33:00	
				06:10	2009/06/01 16:48:00	2009/06/02 01:39:25	
06/02	08:10	2009/06/02 01:24:59	2009/06/02 13:44:59	02:10	2009/06/02 01:54:25	2009/06/02 13:34:25	
	13:10	2009/06/02 13:59:59	2009/06/03 00:00:00	10:10	2009/06/02 13:49:25	2009/06/03 03:01:25	
	55:10	2009/06/02 22:14:59	2009/06/03 00:00:00				
06/03	17:10	2009/06/03 13:29:59	2009/06/04 00:00:00	15:10	2009/06/03 03:16:25	2009/06/03 13:01:25	
				19:10	2009/06/03 13:16:25	2009/06/04 00:56:25	
06/04	48:10	2009/06/04 00:44:59	2009/06/04 09:53:33	22:10	2009/06/04 01:11:25	2009/06/04 16:23:25	
	21:10	2009/06/04 10:08:33	2009/06/05 03:52:11	24:10	2009/06/04 16:23:25	2009/06/05 05:35:25	
06/05	23:10	2009/06/05 04:07:11	2009/06/05 17:43:11	28:10	2009/06/05 05:50:25	2009/06/05 15:05:25	
	32:10	2009/06/05 17:43:11	2009/06/06 03:55:11	31:10	2009/06/05 15:05:25	2009/06/05 21:20:25	
				37:10	2009/06/05 21:35:25	2009/06/06 08:00:25	

Viewing options such as cell coloring and resources shown can be customized, and the status of operations (results, fixed-status etc) can be seen in the table.

The dispatching view is printable, and could be used as a work instructions sheet.

By opening a resource gantt chart window linked to a dispatching view, the strengths of both views can be utilised, with selections in one window being highlighted in the other for clarity.



02

Setup bars can be displayed in the same way as their production task bars

The display of setup and teardown bars on the resource gantt chart can be changed so that the bars appear the same as the production bar.

Details

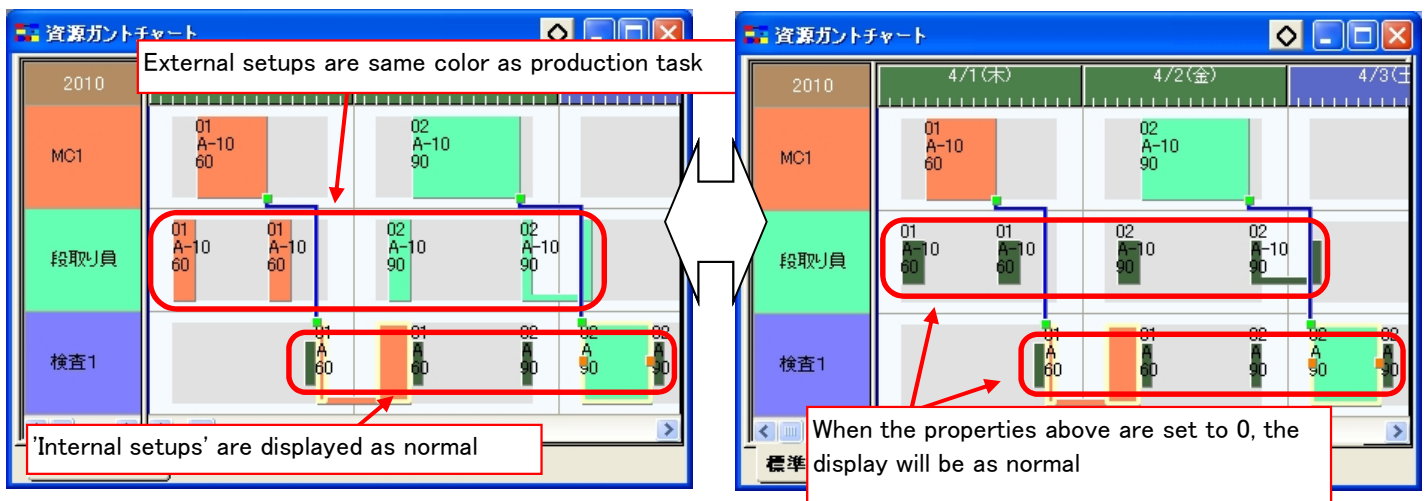
The two properties

Setup time display method

Teardown time display method

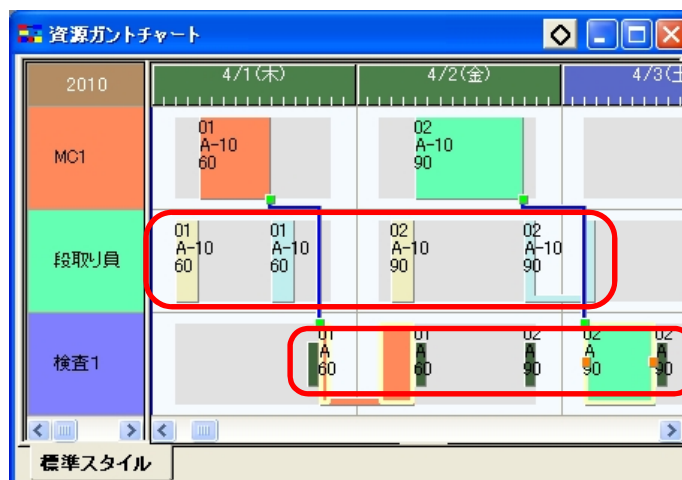
have been added to the resource gantt chart. These are expression properties, allowing for greater control.

For example, displaying setup bars on the main resource as normal, and setup bars on subresources the same as the production bar, makes it easier to see which 'external setups' belong to which production



When setup bars are displayed like their production bar, they can be given custom coloring.

For example in the image below, different colors have been given to setup and teardown tasks for the external setups, further improving the visibility of the schedule.



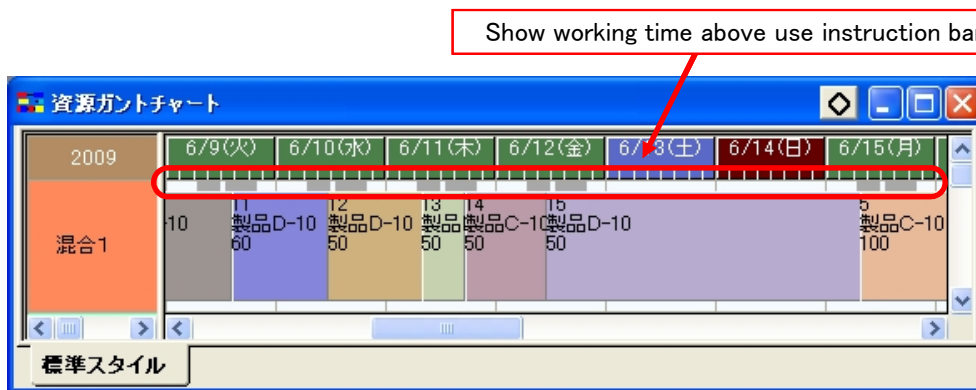
03

Improved viewability of working time on the resource gantt chart

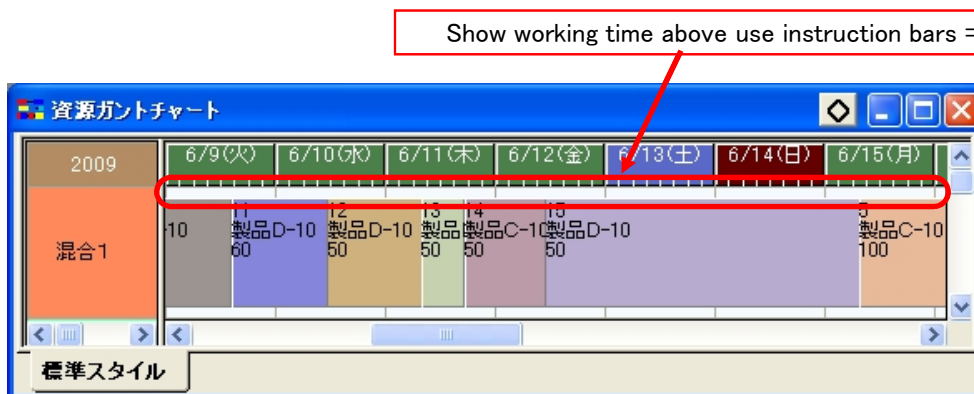
Working time (available time) of resources can be shown above the bars on the resource gantt chart.

Details

When the 'Suspend time display method' property of the resource gantt chart is set to 'None', the operation bars will continue uninterrupted across holidays and periods where resources are not actually available to work, making it hard to differentiate between working time and non-working time. Setting the 'Show working time above use instruction bars' property of the chart to Yes will improve this situation.



Previously, when operation bars were set to not show any suspended time, a situation like this could occur.



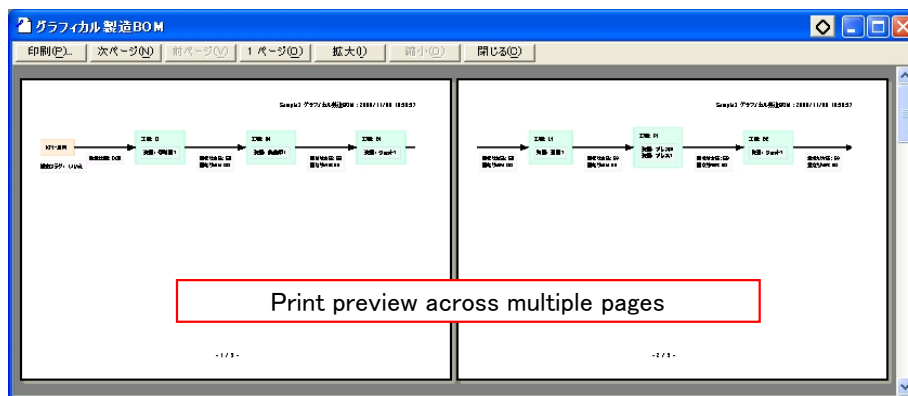
04

Graphical BOM can be printed across multiple pages

The Graphical BOM window now supports printing in its entirety, across a specified number of pages

Details

The entire Graphical BOM can be printed across multiple pages. When the item structure is too large to be effectively displayed on one page, a number of pages can be specified to print over, starting from the top left.

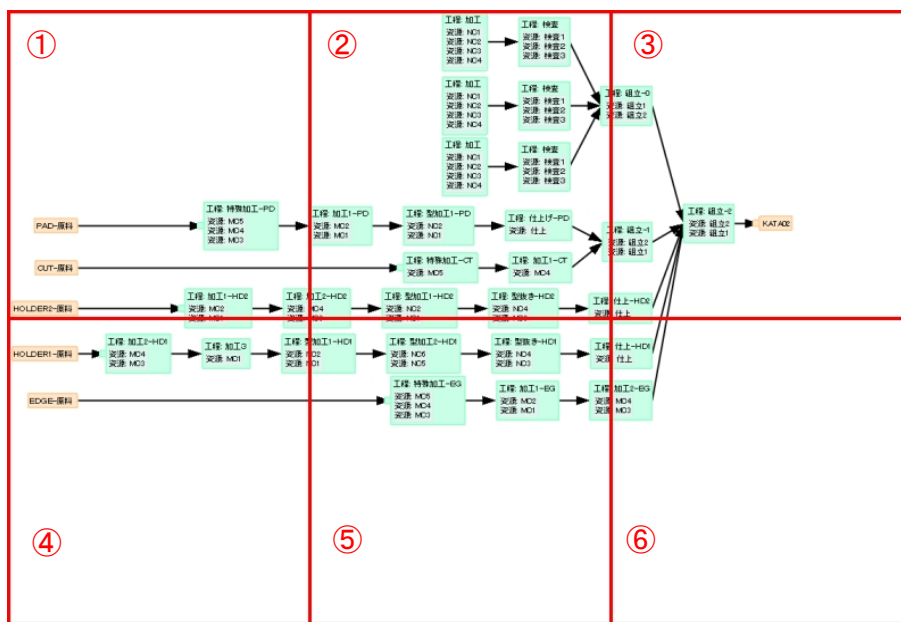


When specifying multiple pages, the number of pages horizontally and vertically can be given, For example with the BOM below, setting:

Number of pages (horizontal) => 2

Number of pages (vertical) => 2

will cause pages ①、②、④、⑤ to be printed.



05

Custom colors can be set for the left-most column of charts

The 'left part color expression' properties (one for each object type) in the chart settings can be used to set custom colors for better viewability.

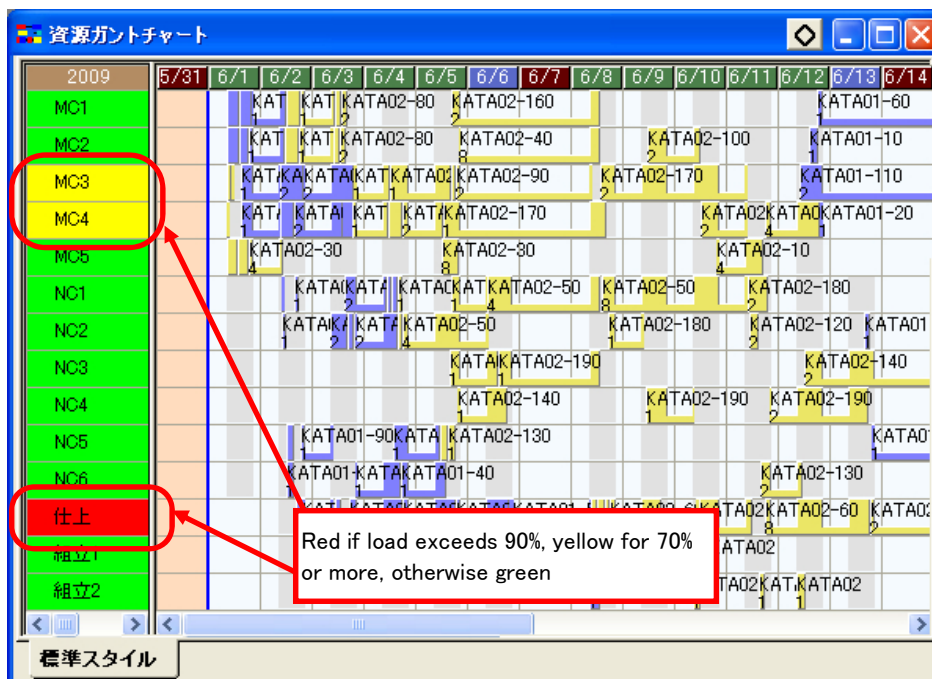
Details

For example, setting the 'Resource left part color expression' in the resource gantt chart to:

```
IF(ME.ResLoadPercentage_Average<70,RGB(0,255,0),
```

```
IF(ME.ResLoadPercentage_Average<=90,RGB(255,255,0),RGB(255,0,0)))
```

will show resources with over 90% load in red for easy identification.



These 'left part color expressions' can be used on all charts including resource gantt, order gantt, operation gantt, load graph, inventory graph etc.

Custom colors can be set in styles and used for a variety of purposes.

06

The description of properties and naming of enumerated type elements can be customized

In the property window, the description of properties can be altered to be more useful, for example describing units of measurement. Each element of enumerated types can be given custom colors and descriptions.

Details

The description shown for a property in the property window can be changed with the User specified description of the property definition (Table View → Advanced Settings → Property Definition).

Names can be set for the elements of enumerated type properties with the Enumeration child name setting.

Used together with the Alias setting for properties (already available in previous versions) the contents of the property window can be made clearer for the user.

As an example, where

- items are recorded by features like length, width, weight
- optional parts are numerous

settings for these characteristics can become hard to keep track of.

Making use of the ability to set property descriptions and enumerated-type names can give a much clearer format than storing this information in a flat format in the comment column.

Edit Property definition

Property	Value
[-] Enumeration child name (3)	weight:length:depth
[-] [1]	weight
[-] [2]	length
[-] [3]	depth
[-] [New data]	

General | Display settings | Common | Interna

OK Cancel

Property	Value	Description
[-] Comments (3)	50kg;1.5;70cm	Product information
[-] [weight]	50kg	Enter the weight
[-] [length]	1.5	Enter the length
[-] [depth]	70cm	Enter the depth

Enumeration child name settings make for easy recognition

Custom property description for easy understanding – enumerated type children can have their own descriptions, as shown here

07

Coloring can be customized for properties in the property window

Colors on the property window can be set to customize the view. This can be useful to visually separate properties and reduce errors.

Details

Setting custom colors for properties themselves can be useful to

- show where input must be given
- differentiate properties

making input more straight-forward and less error-prone.

Settings are made in the project's Display color settings.

Setting the Background color expression and Text color expression can allow instant recognition of missing values or values outside a given range.

Edit Order		
Property	Value	Description
Order01	Order01	
Cabled	No	Is grounding cable included
Connector size (3)	780;400	Connector size
[Conn height]	780	mm(800 - 1500)
[Conn width]	400	mm(400 - 1000)
[Conn depth]		mm(20 - 100)
Fitting 4		Does this connector use type 4 fitting
Pipe connector		0...Front dia, 1...Rear dia
Surface proc	No	Set to Yes if post-processing necessary

Cell background color set to red when value is missing

Property window body colors set so that properties requiring input are a different color

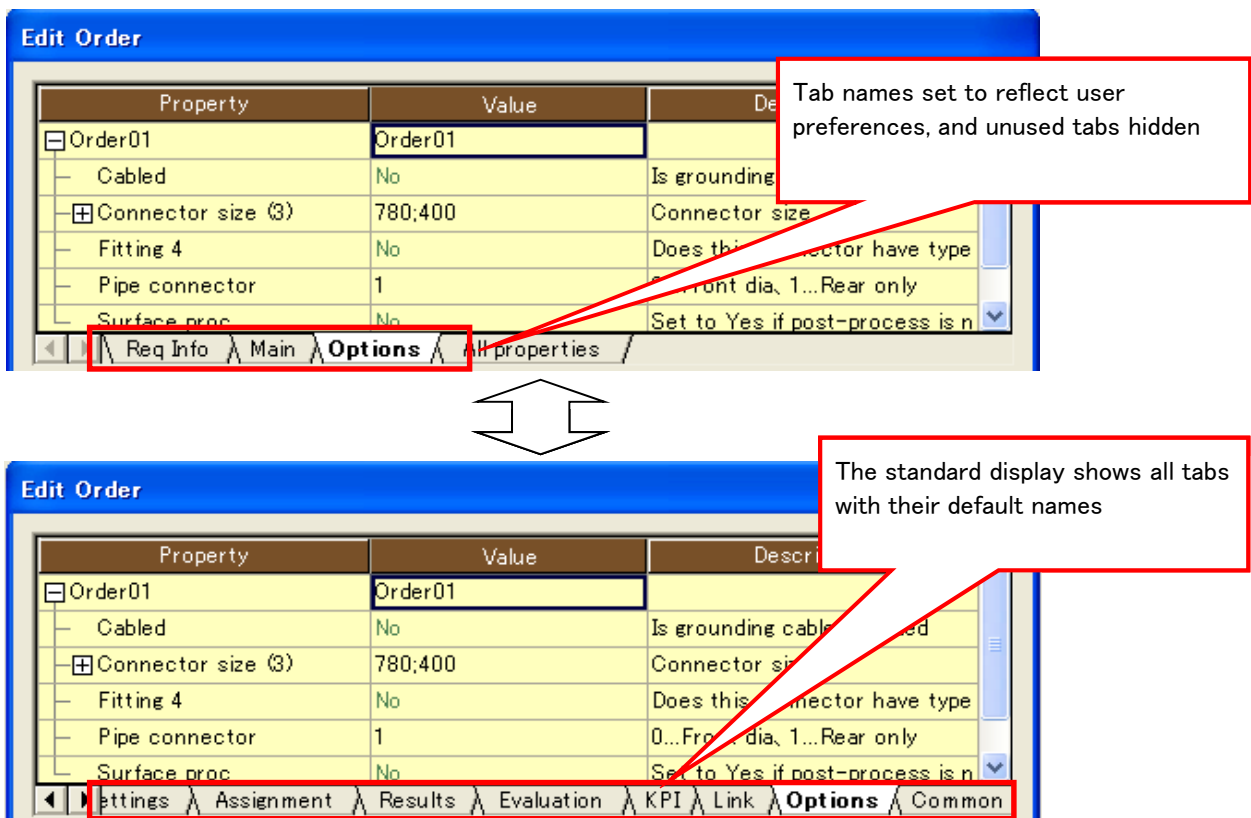
08

Display of tabs in the property window can be customized

Tab names can be customized, and tabs can be hidden in the property window. Limiting tab display to those used most can simplify usage.

Details

Tab names can be customized, and tabs can be hidden in the property window. Limiting tab display to those used most can simplify usage.



09

Tentative assignment messages show more detail

In messages output during scheduling, information on the master use instructions evaluated (setup, production, teardown) will be shown.

Details

In messages output during scheduling, information on the master use instructions evaluated (setup, production, teardown) will be shown.

In addition, double-clicking on these messages will jump to the relevant entry in the integrated master for easy confirmation.

This can be useful in the following cases

- needing to see basic info on the setup, production or teardown
- wanting to quickly check other properties of the use instruction in the integrated master
- wanting to check which task selector was used, in cases where resource names are the same for different task selectors

Setup, production, teardown times shown

Relevant master use instruction is highlighted with blue underline

Double-click to jump

Item	Process	Process	Instruction type	Instruction	Resource/Item	Setup	Production	Teardown	Production	Valid period start date	Valid period end date	Tcon
1	A	10	CT	Input i	In	M1	1					ES
2				Use in	M	CT1	10	5mp	20			ES
3		20	PR	Input i	In0	A-10						ES
4				Use in	M	PR2	30	8mp	10			ES
5				Use in	M	PR1	60	6mp	10			ES
6		30	CK	Input i	In0	A-20						ES
7				Use in	M	CK1		3mp	0.8		#2009/10/06	ES
8				Use in	M	CK1		3mp	1	#2009/10/06		ES
*												

10

Import speed can be improved by specifying a filter using SQL

When the external datasource is of type OLEDB, a partial SQL string can be appended to the WHERE clause of the query used for importing. This can speed up the importing process. For exporting, refreshing external data

Details

The specified SQL string will be appended to the WHERE clause of the query issued to the external datasource.

For importing, this can be used to restrict the data imported to a smaller subset, and avoiding the need to use the slower 'Import external filter expression' after the data has arrived within Asprova.

Property	Value	Description
<input checked="" type="checkbox"/> Ops_OK	Ops_OK	
<input type="checkbox"/> Import	Yes (differential)	Imports data.
<input type="checkbox"/> Import SQL filter command	ItemCode like "Cap-%"	Used for filtering the records
<input type="checkbox"/> Import external filter expr		Used for filtering objects impo
<input type="checkbox"/> Import internal filter expr		Used for filtering objects alre
<input checked="" type="checkbox"/> Import property conversio		Sets properties of each objec
<input type="checkbox"/> # rows to skip		Specify here the number of r
<input type="checkbox"/> Record merge rule	65535	Specify here the rule for mer

General Import Export Common Internal All properties

For exporting, this clause will be used to retriect the external records which will be cleared before performing an "export all" export.

Property	Value	Description
<input checked="" type="checkbox"/> Ops_OK	Ops_OK	
<input type="checkbox"/> Export	Yes (all)	Exports all data. Text files: Al
<input type="checkbox"/> Export SQL filter command	ItemCode like "Cap-%"	Used for filtering the records
<input type="checkbox"/> Export filter expression		Used for filtering data to be o
<input checked="" type="checkbox"/> Export property conversio		Sets properties of each objec
<input type="checkbox"/> Export deleted objects	No	Does not export deleted obje
<input type="checkbox"/> Export duplication check	No	Does not perform duplication
<input type="checkbox"/> Clear table before export	Yes	Clears the external table befo

General Import Export Common Internal All properties

11

Executing commands for selected objects

For example after selecting some bars on the gantt chart, a scheduling parameter can be executed for only the operations of the selected set. This can be useful to quickly change the properties of a group of operations.

Details

The command

Upload selected operations

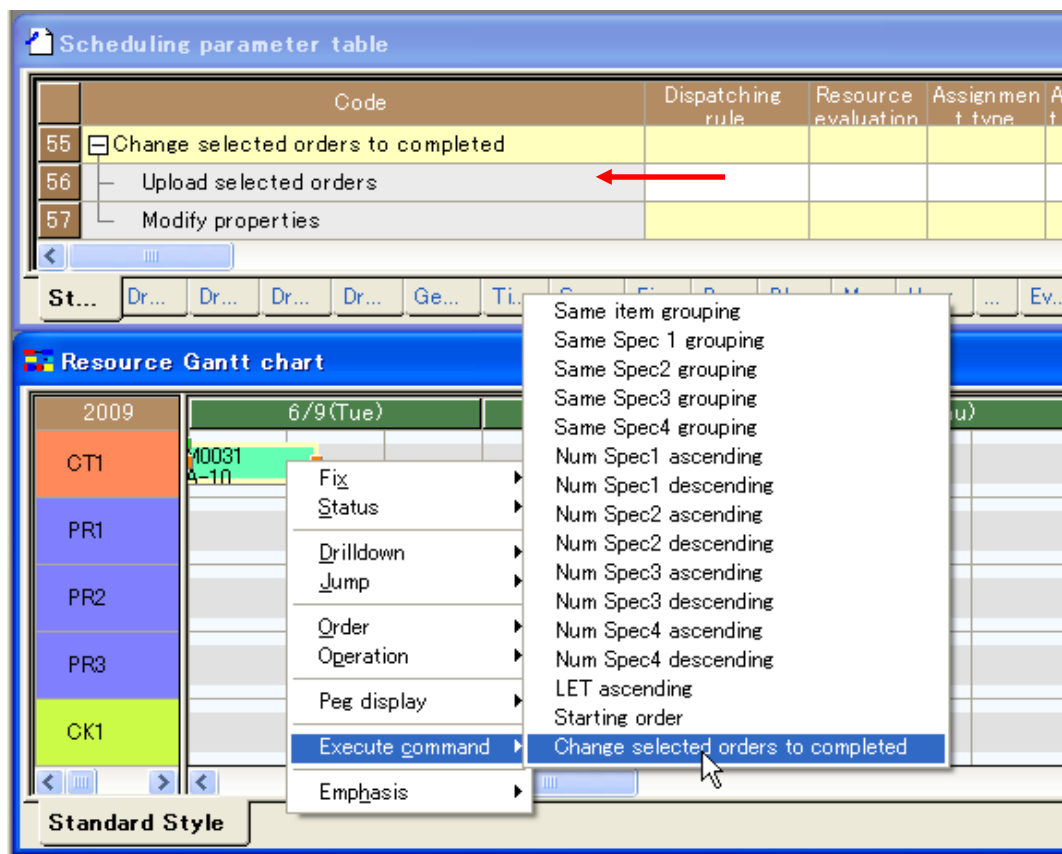
has been added, and can be included in a scheduling parameter in place of 'Upload operations'.

As the name implies using this command will apply the scheduling parameter to only those objects selected in the GUI. An 'Upload selected orders' command is also available.

The image below shows how this feature can be utilized from the popup menu of a gantt chart to quickly make modifications to a selected group of orders.

In this example the 'Order expression' of the Modify properties command would be set to:

ME.Status='Completed'



12

Other notable improvements/additions

Many other upgrades have been made including those below.

Details

- Errors during import/export can be detected and the error code will be set in the DBIO for reference.
- Speed improvements for rescheduling
- Windows 7 support
- Better response from the progress dialog when clicking Cancel during rescheduling.
- Added commands Close, Revert, Exit to allow these actions within scheduling parameters.
- Improved display of User registration information dialog.
- Internal function additions
- COM interface additions
- Inactive users can be forcibly logged out of Asprova NLS in order to free up licenses.